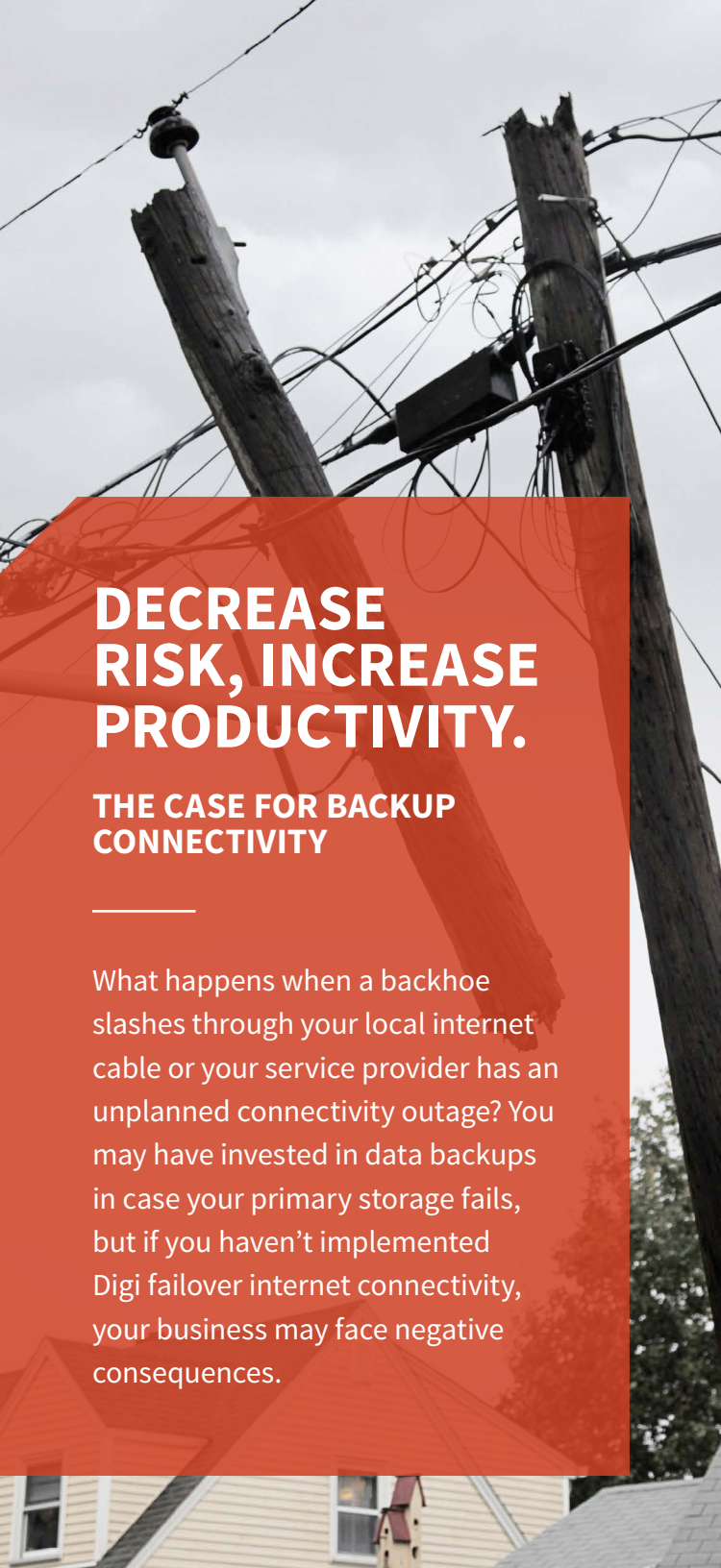




**DEPENDABLE
CONNECTION.
UNPARALLELED
SERVICE.**

DIGI NETWORK FAILOVER SOLUTIONS



DECREASE RISK, INCREASE PRODUCTIVITY.

THE CASE FOR BACKUP CONNECTIVITY

What happens when a backhoe slashes through your local internet cable or your service provider has an unplanned connectivity outage? You may have invested in data backups in case your primary storage fails, but if you haven't implemented Digi failover internet connectivity, your business may face negative consequences.

COSTS TO ORGANIZATION

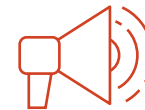
Without a secure connection, loss of productivity and an increase in unexpected, unnecessary costs add up quickly. Whether paying workers who no longer have tasks to complete, damaging your reputation, or missing the opportunity to complete sales transactions, you can't afford to operate without a reliable connection.



REVENUE LOSS



PRODUCTIVITY LOSS



BRAND IMPACT



STAFFING COSTS



EXPENSIVE SOFTWARE LICENSING

TECHNICAL COMPLICATIONS

During outages and temporary work-arounds, your PCI compliance is at risk. Additionally, you may lose critical in-transit data in the middle of transactions, and forced rollbacks, disablements, and re-synching can wreck havoc on your business applications. Avoid these pitfalls by incorporating Digi failover into your business.



DATA LOSS



SECURITY ISSUES



IT HEADACHES

PROTECTING YOUR CONNECTION. 24/7.

WHAT IS DIGI FAILOVER?

Failover involves switching to a redundant or standby internet connection that is activated if the primary connection fails or is disrupted.



WHAT'S BEST FOR MY BUSINESS?

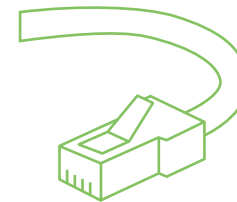
Wireless vs. Wired Failover Solutions



WIRELESS FAILOVER SOLUTIONS

With a wireless connection, your business can seamlessly and immediately switch from a disrupted wired connection to an always-on, high-speed, low-cost standby connection. This is optimal for distributed connections. No wiring is required.

VS.



WIRED FAILOVER SOLUTIONS

Wired solutions are often a cost-prohibitive choice that provide very little improvement in uptime. Since wired lines are most often laid in the same locations, they will likely experience the same environmental risks—and potential damage—from weather, accidents, and other factors.

DIGI TRANSPORT® ROUTERS:

ALWAYS-ON WIRELESS CONNECTIVITY

DIGI REMOTE MANAGER®

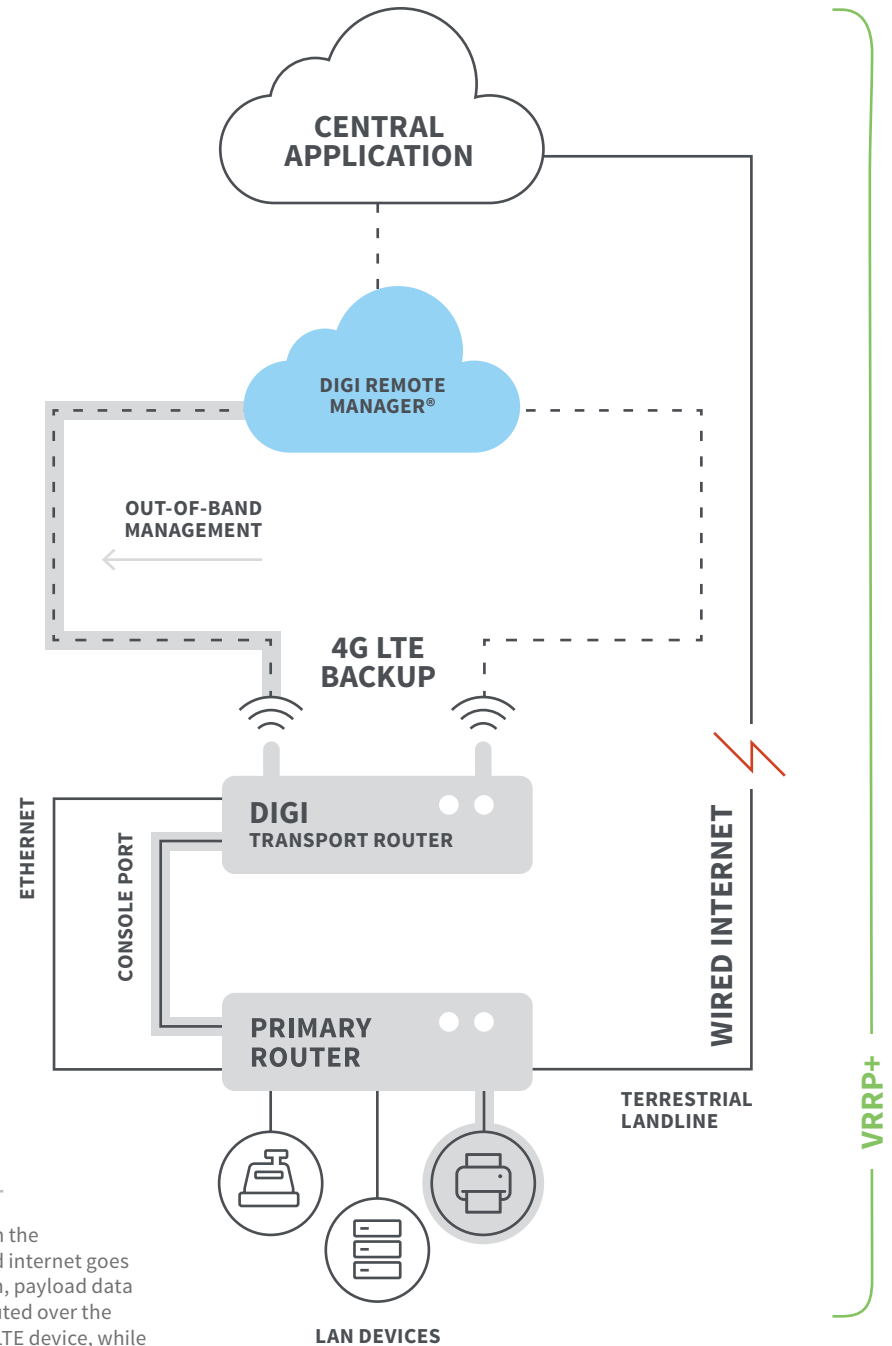
Centralized device-management solution helps you monitor the status of your Digi TransPort device and its connection status with reports, alerts, and statistics. Like all Digi software, Digi Remote Manager® is PCI-compliant, and serves as your window into out-of-band management.

LICENSE-FREE OUT-OF-BAND MANAGEMENT

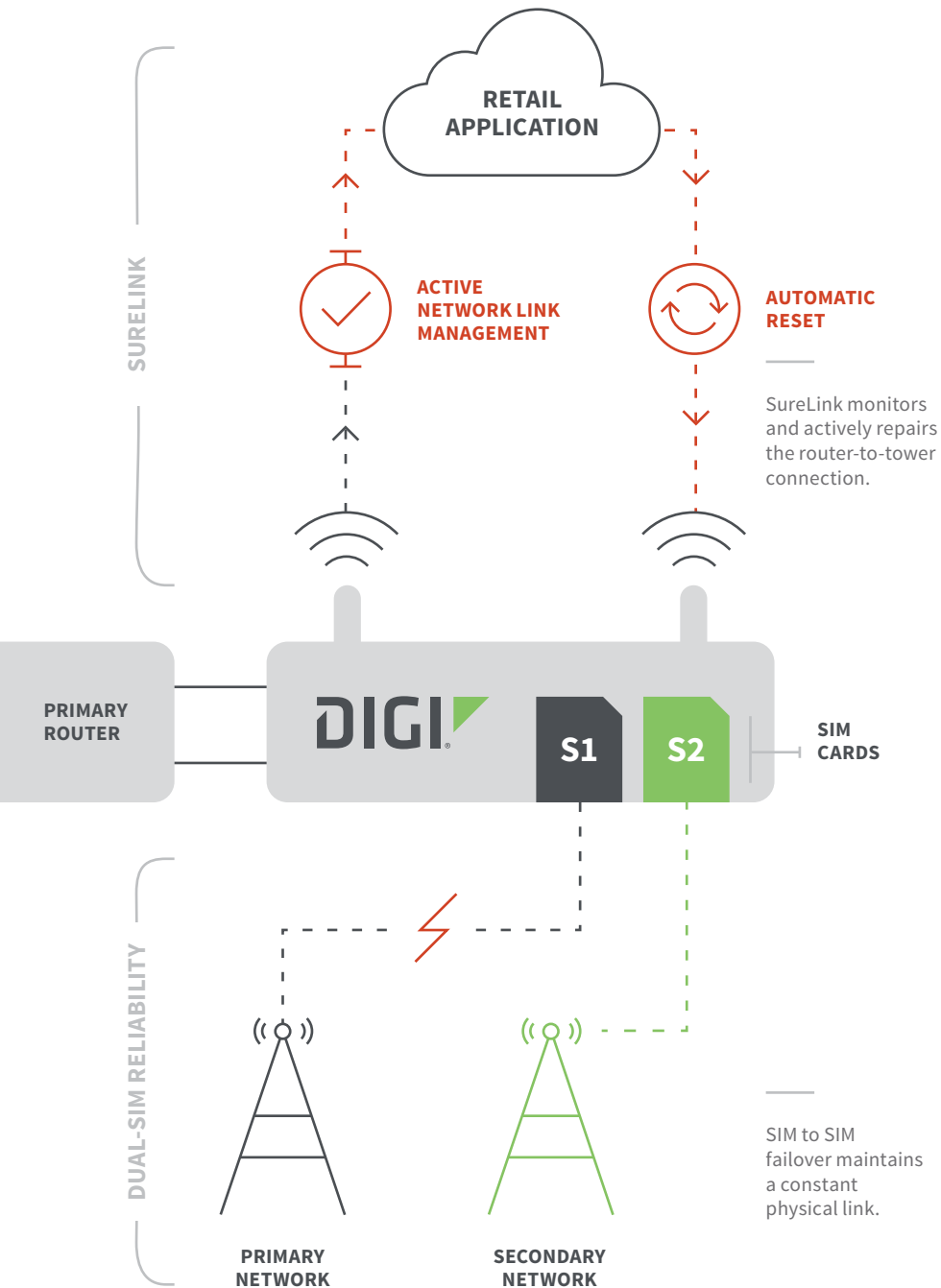
An out-of-band connection provides reliable access to the Digi TransPort router, even if the network stack or user interface is down. Although it doesn't replace in-band management, it enables you to respond faster when standard tools are unavailable.

VRRP+

Digi takes the Virtual Router Redundancy Protocol (VRRP+) one step further by sending a probe from the Digi TransPort router to an IP address at a remote location. This enables TransPort routers to provide both logical and physical redundancy and failover based on the status of connections behind the router.



When the wired internet goes down, payload data is routed over the Digi LTE device, while the Digi serial port provides console access to manage the primary router.



ALWAYS-ON WIRELESS CONNECTION

SURELINK®

SureLink provides always-on connectivity by sending and receiving keep-alive packets at configurable intervals to and from the Digi TransPort routers.

DUAL-SIM RELIABILITY

Digi SureLink provides link integrity and offers dual-SIM reliability, meaning if one of the SIM cards in your router cannot communicate with the primary network, the second SIM card will automatically take over to establish and maintain a connection.



LEARN MORE
[DIGI.COM](https://www.digi.com)



TOTAL COST OF OWNERSHIP

CHOOSE DIGI FOR THE LOWEST TOTAL COST

The Digi failover package comes with a best-in-industry 5-year warranty, license-free enterprise software and ongoing firmware updates. Other manufacturers will charge individually for critical licensing, tech support and extended warranties, but with Digi, these benefits are included in your total cost.

WHAT'S INCLUDED AT NO ADDITIONAL COST?

	DIGI	COMPETITOR
5-Year License for Advanced Routing Features	✓	✗
5 Years of Tech Support	✓	✗
5-Year Warranty	✓	✗
Ethernet Port Isolation/VLAN	✓	✗
Stateful Firewall	✓	✗
IPsec, L2TP, PPTP, OpenVPN	✓	✗
MAC Filtering	✓	✗
GRE Tunneling	✓	✗
Network Device Uniformity	✓	✗
Dynamic Routing Protocols (BGP, RIP, etc)	✓	✗
VRRP+ WAN Failover	✓	✗
Wired WAN (ADSL/Cable)	✓	✗
Event Logging	✓	✗
Quality of Service	✓	✗
Analyzer Trace	✓	NOT OFFERED
Modbus and DNP Protocol Support; Python Scripting	✓	NOT OFFERED